

BABAT SWPBS & ABA Applications: Comments

George Sugai

OSEP Center on PBIS

Center for Behavioral Education & Research

University of Connecticut

Oct 15 2011

www.pbis.org www.cber.org



2. Deb Adam & Mark

Generaliz. use of continuum, data, ABA, etc.

Staying close to ABA, e.g., teach. S.S. (stim. cont.)

Environ assess. for prac. impl.

Value of implem. fidelity

3. Marcie

Applic. of ABA to CW

Link. SW to CW

Link. acad. to soc. beh.

Improve. Impact of evid. prac

1. Bob

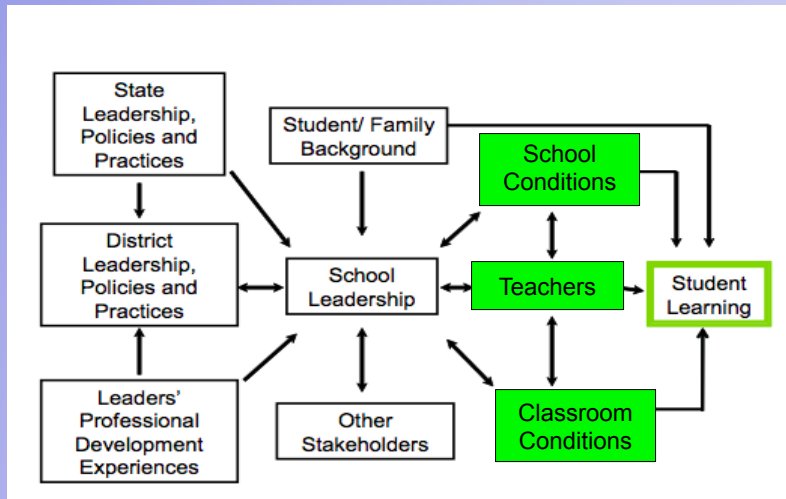
Curric. v. framework

Taking ABA to scale in public educ.

Redesign. environ. for pos. reinf.

Improving qual. of indiv. in group context

Factors Contributing to student learning



Louis, Leithwood, Wahlstrom, & Anderson (2010).



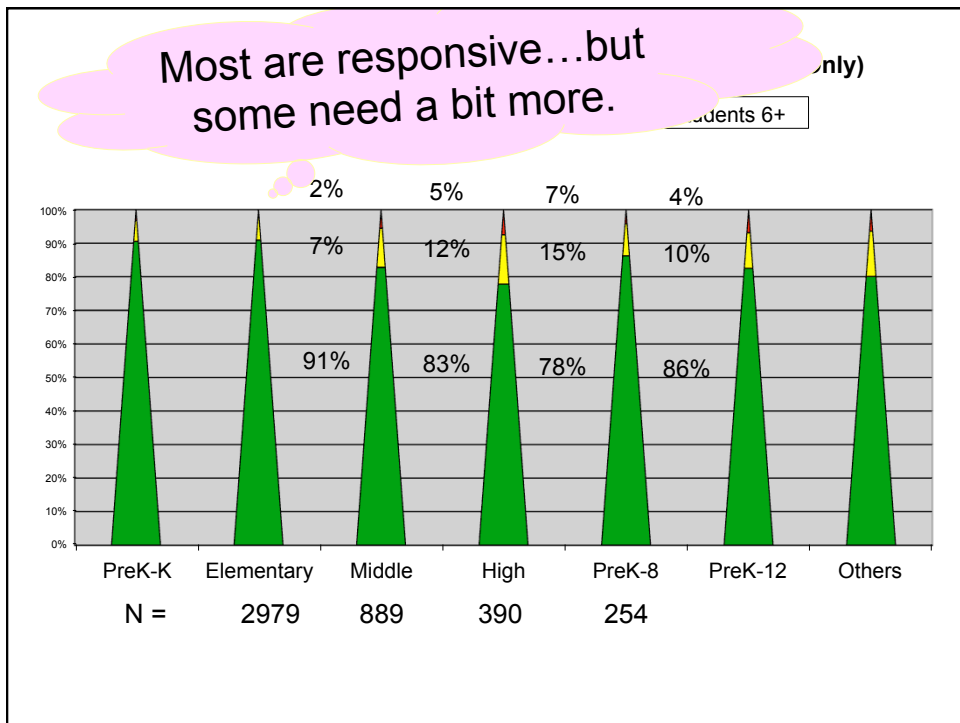
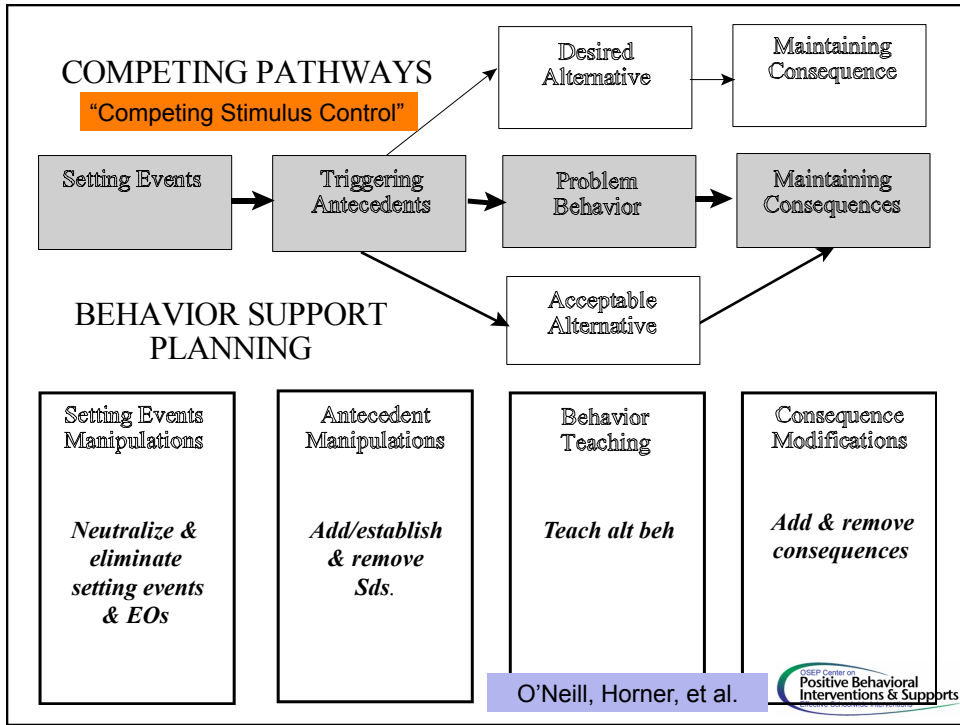
Prevention Logic

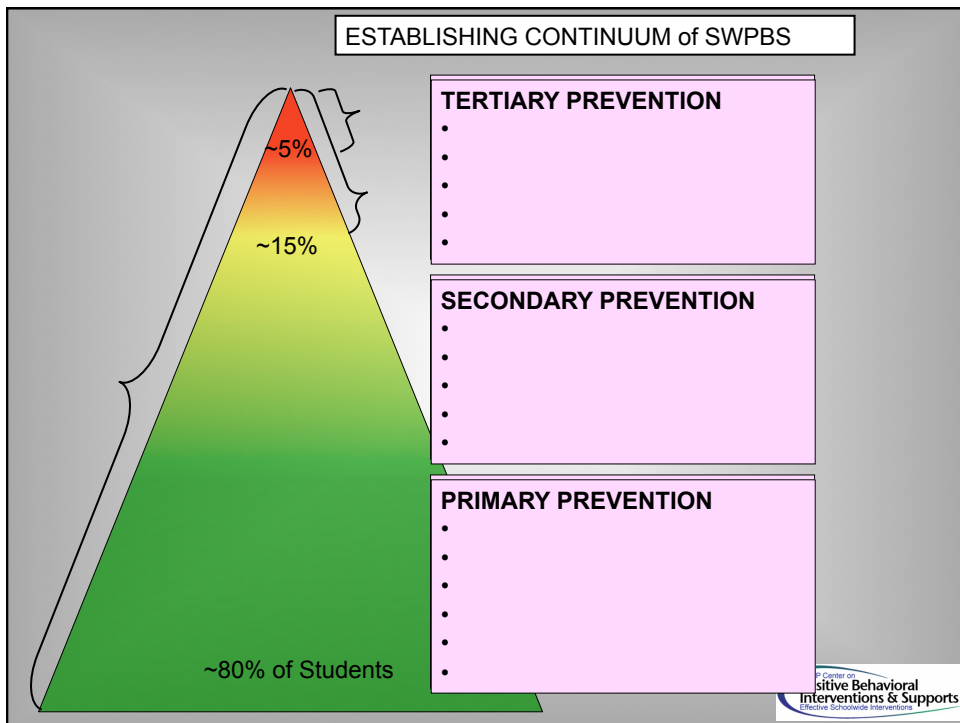
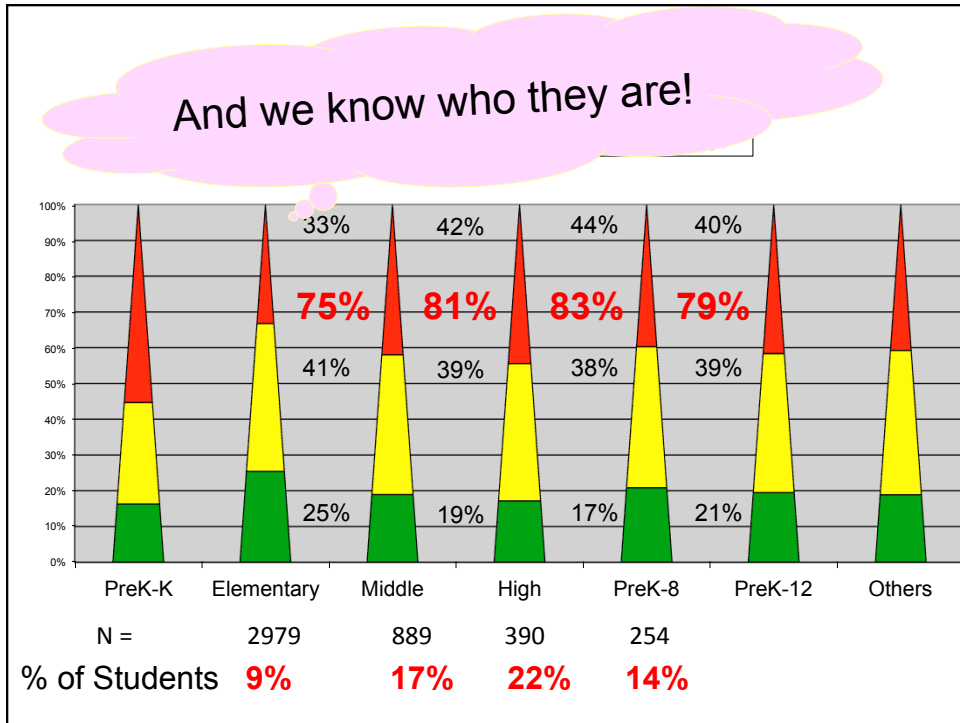
Biglan, 1995; Mayer, 1995; Walker et al., 1996; Iwata, Oct 15 2011

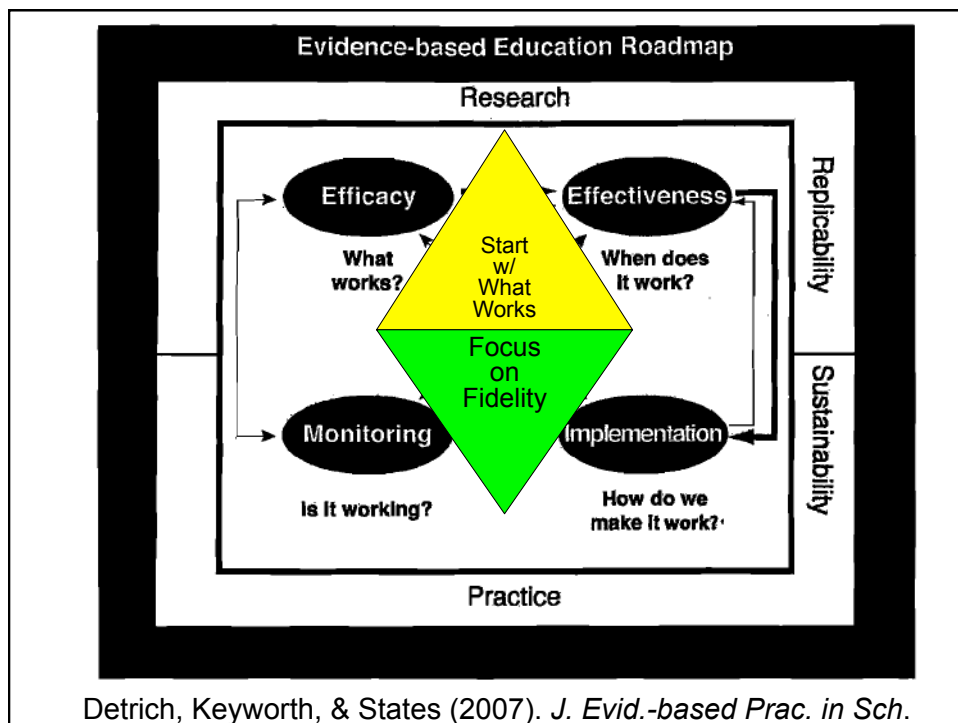
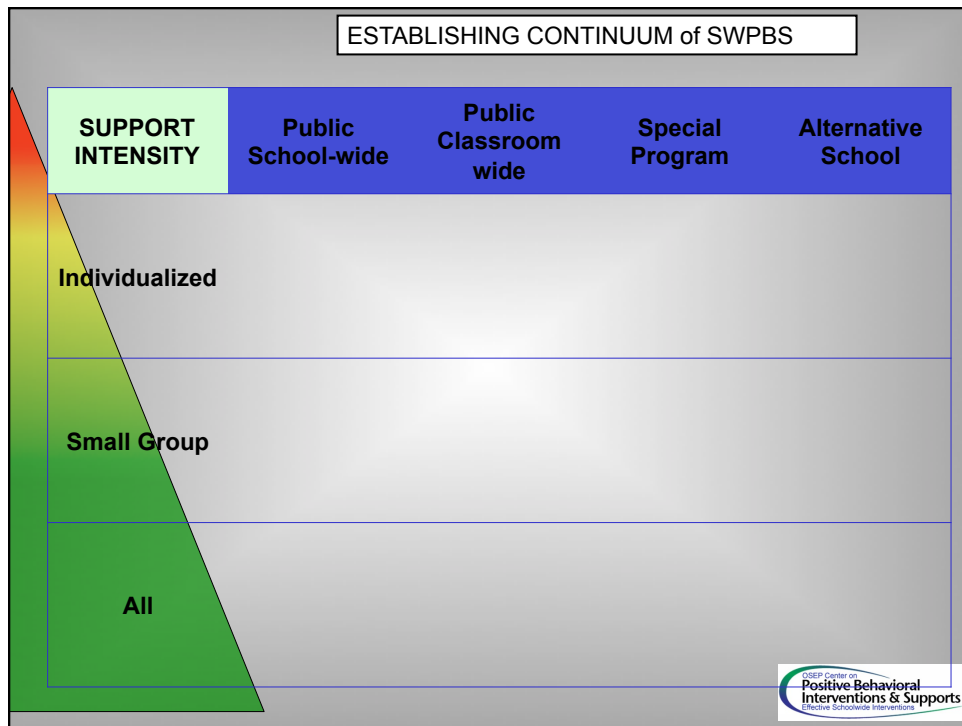
<p>Decrease develop. of new problem behaviors (stim. control)</p>	<p>Prevent worsening & reduce intensity of existing problem behaviors (cont. manag. & stim. control)</p>	<p>Eliminate Sds & reinf of problem behaviors (extinction, stim. control)</p>	<p>Add Sds & pos. reinf. of approp. behavior (stim. control)</p>	<p>Teach, monitor, & acknow. prosocial behavior (stim. control, pos. reinf)</p>
--	---	--	---	--

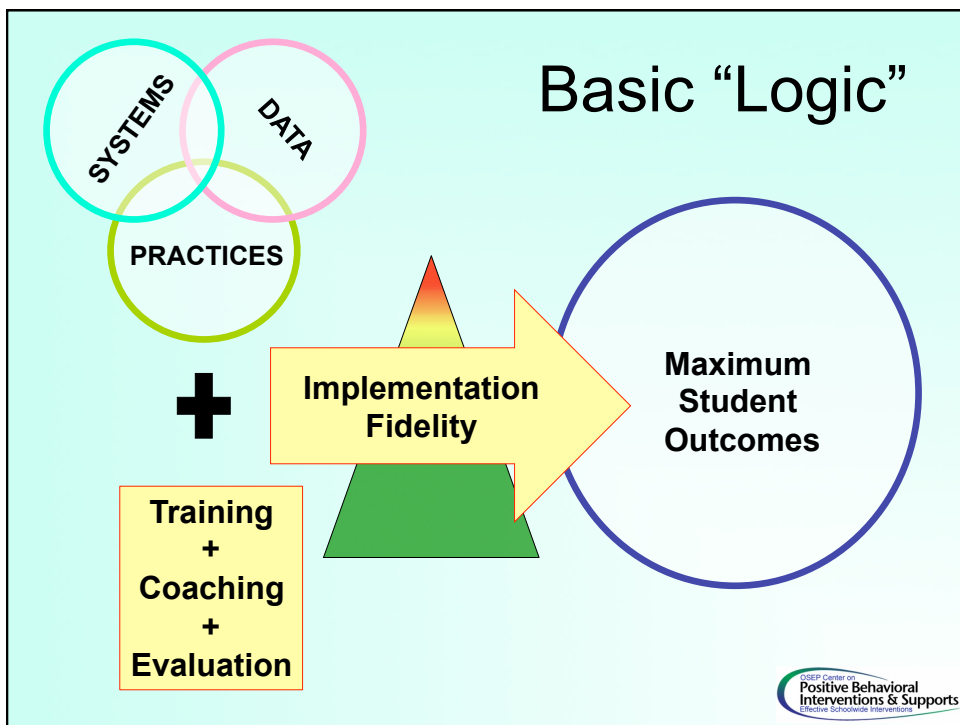
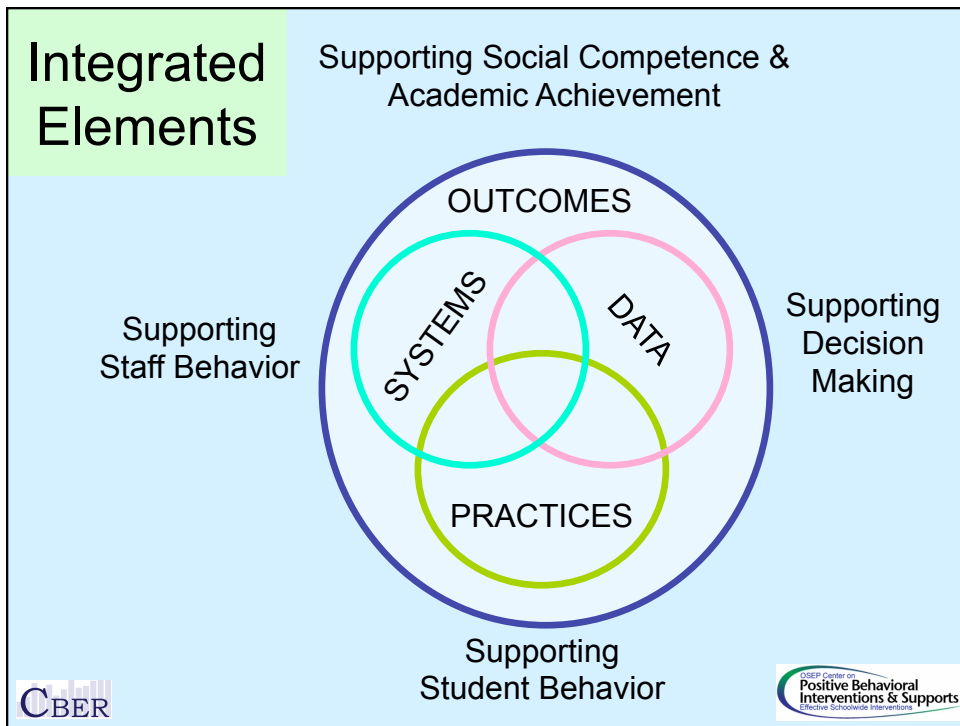
Redesign of teaching environments...not students

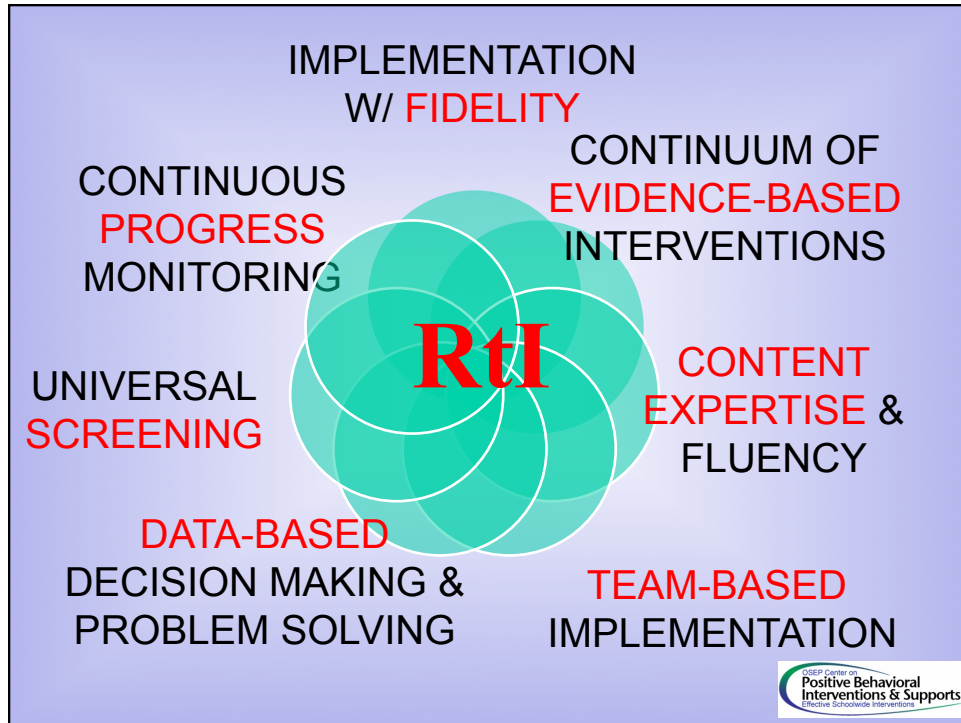












Messages (S...)

CONSIDERATIONS

- ABA **implementation** fidelity, sustainability, scaling
- **Other**: bullying behavior, culture disproportionality, restraint/seclusion, school completion, academic achievement. NEXT?
- Documentation & **replication** across organizations
- Demonstrate effects on effectiveness and efficiency of **individual** supports in **systems** context

"PBIS" as **mechanism/framework** for organizing implementation of behavioral technology

Center for Positive Behavioral Interventions & Supports
Effektive Schoolwide Interventionen

CONSIDERATIONS

- ABA **implementation** fidelity, sustainability, scaling
- **Other**: bullying behavior, culture disproportionality, restraint/seclusion, school completion, academic achievement. NEXT?
- Documentation & **replication** across organizations
- Demonstrate effects on effectiveness and efficiency of **individual** supports in **systems** context