



Letter from our President  
Revving Up For Rodman Ride 2008  
PAGES 2-4



Lawmakers Visit May Center Campus  
Strengthening Autism Services in NJ  
PAGES 5-7



Making Strides for Autism in Georgia  
NAC Offers Boston Autism Screenings  
PAGES 8-11

## Celebrating the people and programs

# @MAY

News from May Institute, a national nonprofit provider of behavioral healthcare, education, and rehabilitative services

## MAY INSTITUTE RECEIVES OVER \$1 MILLION FOR PEDIATRIC CENTER

Triple-digit temperatures in San Jose were not the only thing breaking records on a steamy Saturday in May, when Cadence Design Systems, Inc., held its annual Stars & Strikes® fundraiser on behalf of May Institute.



Photo courtesy of Cadence Design Systems, Inc.

*Representatives from May Institute, Silicon Valley Children's Hospital Foundation, and Good Samaritan Hospital celebrate as they receive the big check from Cadence.*

Bowlers representing companies from across Silicon Valley, side by side with dozens of the San Francisco 49ers, competed to break personal records, beat each other's teams, and raise the most money for a new pediatric center.

At the end of a very successful and fun-filled day, Cadence presented a check for over \$1 million dollars to May Institute, the 2008 beneficiary of the Cadence Stars & Strikes® fundraiser. Among those accepting the check were: former May Institute Board Chairman **John Murphy**;

Leslie Kelsey of Good Samaritan Hospital; Kathleen King of Silicon Valley Children's Hospital Foundation (SVCHF); May Institute Chief Clinical Officer **Dennis C. Russo**, Ph.D., ABPP; Dr. Michael May, son of our founder, Dr. Jacques May; and May Institute Chief of Business Development **Heidi Howard**, M.P.A.

R. L. Smith McKeithen, Executive Vice President of Cadence Design Systems, Inc., presented the check.

## U.S. Senate Hosts Autism Exhibition

Senator Edward M. Kennedy (D-MA) was one of thousands who recently viewed the *Faces and Voices of Autism* photo exhibit, which was on display in the United States Senate Russell Office Building Rotunda for one week in April to mark Autism Awareness Month.



Photo courtesy of Andrew Child Photography

*Pictured with Senator Kennedy are (l-r) May Institute staff: Juanita Class, Director of Graphic Design; Heidi Howard, M.P.A., Chief of Business Development; and Abbey Maney, Educational Services Liaison.*

A traveling exhibit that combines compelling photos with powerful stories, *Faces and Voices of Autism* opens a window into the lives of children with autism that is ordinarily closed to the public. Created

## LETTER FROM OUR PRESIDENT



“Together, we work to create new and more effective ways to meet the special needs of individuals and families.”

That commitment is part of May Institute’s vision statement. It implies collaboration — not just with each other and the families we serve, but with the larger community. Our relationships with the broader world have led to sometimes unexpected partnerships and achievements that have indeed created new and more effective ways to serve others.

Reading through this latest issue of *@May*, I am struck by the many significant relationships and partnerships that are at the foundation of much of what is new and exciting at May Institute today.

The generosity of Cadence Design Systems in California, and that of our own program staff as they reach out to their families and friends in support of the Rodman Ride for Kids in Massachusetts, for example, has created tremendous opportunities for both new and expanded programming for children with special needs.

Clinical partnerships, such as the one in New Jersey to establish an Autism Center of Excellence with the Center for Neurological and Neurodevelopmental Health, allow us to expand critical service networks throughout the country. On a more local level, the National Autism Center’s new partnership with Whittier Street Health Center will bring free autism screenings to historically underserved communities in Boston.

Donor relationships are also directly impacting the lives of the individuals we serve. Unprecedented community-based support recently culminated with the opening of a beautiful new home for four young men in Easton, Mass.

And, as we continue to develop relationships with key legislators in Massachusetts and beyond, we join forces with those whose voices can help advance our goal of enabling children and adults with disabilities to lead the fullest lives possible.

Through an exchange of ideas across countries and cultures, we are helping to shape the landscape of autism-related services in this country and abroad. Recent visits from colleagues from Poland, Ireland, Saudi Arabia, and Iceland highlight our leadership role in the world of autism and our other areas of expertise, including Positive Behavior Support.

As we have grown in the past 30 years from one small school to a national network of programs, we have built relationships with some of the best and brightest in the fields of autism, special education, and applied behavior analysis. Many of our senior clinical staff are now ranked among those top national experts. Recognizing that ongoing progress for people with special needs depends upon the quality and training of the individuals who serve them, we are committed to helping train the next generation of professional leaders.

I invite you to read on and learn more about what is happening today throughout May Institute. As our 2,300 staff provide exceptional care each and every day, we continue to reach out and forge powerful partnerships that help us attain our vision.

Warm regards,

Walter P. Christian, Ph.D., ABPP  
President and CEO

## May Institute Expands Global Reach Shares Expertise With International Colleagues

May Institute's reputation for excellence in the field of human services has long attracted the interest of colleagues from throughout the world. Most recently, our expertise in the fields of applied behavior analysis (ABA) and Positive Behavior Support (PBS) has helped us forge new alliances with educators in Poland and Iceland.

For Monika Suchowierska, Ph.D., BCBA, Director of the Center for Early Intervention in Warsaw, Poland, the opportunity to collaborate with May Institute is "a dream come true."

"I want to establish our Center as a strong, science-based institute that collaborates with universities and other well-established, very effective organizations such as May Institute," she said in an interview during a recent visit to May Institute in Massachusetts.

monthly presentations and peer review. These inter-country meetings are made possible through the use of software that enables video conferencing over the Internet.

In April, **Lauren C. Solotar**, Ph.D., May Institute's Chief Psychologist and Senior Vice President of Clinical Services, traveled to Poland to attend a conference sponsored by the Warsaw School of Social Psychology and the Polish ABA organization. While she was there, Dr. Solotar gave a presentation at the



*l-r: Agnieszka Aksamit-Ramotowska, Senior Therapist at the Center in Warsaw, and Monika Suchowierska, Ph.D., BCBA, Center Director, during their recent visit.*

May Institute Chief Clinical Officer **Dennis C. Russo**, Ph.D., ABPP, met Dr. Suchowierska several years ago at a national ABA conference and the two began a dialogue about potential collaborations. As a result, the Institute and Dr. Suchowierska's Warsaw Center signed an agreement to exchange information via

school and consulted on cases at the Center.

May Institute is helping the Center in Warsaw develop a "Step-by-Step" preschool program for children with autism – the first program of its kind in Poland. In addition, the National Autism Center has signed an agreement to provide parent

## notable NEWS

- MSNBC, Yahoo Finance, CNN Money, FOX Business, and MSN Money Central websites all carried the news that May Institute was the beneficiary of the \$1.045 million raised as a result of the Cadence 2008 Stars & Strikes® Fundraiser.
- *Exceptional Parent* magazine featured an in-depth article authored by May Institute's Chief Operating Officer **Alan E. Harchik**, Ph.D., BCBA, and Chief Psychologist **Lauren C. Solotar**, Ph.D., in the Military Section of the April edition. Entitled, "Autism's Challenges: Combating Stress on the Home Front," the article offered advice to parents on how to respond to a diagnosis, choose effective treatments, build support, and manage stress in order to maintain a balanced lifestyle.
- **Gwen Martin**, Ph.D., BCBA, Clinical Director of the Southeast Regional Autism Center, authored an article entitled, "Autism Diagnoses Increase Over the Past Decade." The article, which discussed autism symptoms and treatment, was published in *The Bayonet*, the newspaper of the Fort Benning military installation. The Center was also featured in the Columbus, Ga., *Valley Parent* magazine article, "Autism Services Expand."
- The *Lawrence Eagle Tribune* article, "Behavior Program Attracts International Attention," highlighted May Institute's implementation of Positive Behavior Support (PBS) programming in eight public schools in the city of Lawrence, Mass. Educators from Iceland who were being hosted by May Institute met with Lawrence teachers and district administrators to discuss the Institute's PBS model. The article quotes **Robert F. Putnam**, Ph.D., BCBA, May Institute's Senior Vice President of Consultation Services.
- The *Mashpee Enterprise*, *Bourne Enterprise*, *Falmouth Enterprise*, and *Sandwich Enterprise* recently featured the two-part series, "Autism: Heed the Red Flags, Get Guidance As Soon As Possible" and "Autism Knows No Borders, As Many Cape Families Have Learned." The series included interviews with **Susan M. Wilczynski**, Ph.D., BCBA, Executive Director of the National Autism Center, and **Simone Byrne**, M.A., BCBA, May Center Director of Family Services, Chatham, Mass.

### 2008-2009 AUTISM SPEAKER SERIES

May Institute's speaker series, "Experts on Autism," offers families, educators, and clinicians the opportunity to attend free workshops on a variety of autism-related topics.

The series is jointly sponsored by the May Center for Child Development and the National Autism Center, both located in Randolph, Mass. The first workshop will be held on September 10, 2008, at 6:30 p.m. at the Randolph campus.

**Susan M. Wilczynski, Ph.D., BCBA**, Executive Director of the National Autism Center, will provide an overview of the results of the National Standards Project. The goal of this project is to provide information about the quality, quantity, and consistency of research outcomes concerning the numerous educational and behavioral treatments available for individuals with autism spectrum disorders.

*For additional information about these workshops, or to register, please call 800.778.7601, ext. 456.* ☺

### PBS FORUM FOR EDUCATORS

May Institute's fourth annual forum on Positive Behavior Support, "PBS: Research to Practice," will be held at the Four Points Sheraton Hotel in Norwood, Mass., on Friday, November 21, 2008.

Keynote speakers will include: George Sugai, Ph.D., Carole J. Neag Endowed Chair and Professor of Special Education in the School of Education, and co-director of the Center on PBIS at the University of Connecticut; and **Susan M. Wilczynski, Ph.D., BCBA**, Executive Director of the National Autism Center.

*For additional information about the forum, or to register, please call 800.778.7601, ext. 456.* ☺

### DISSEMINATING BEST PRACTICES

Professionals from May Institute and the National Autism Center recently joined thousands of behavior analysts in Chicago for the 34th Annual Association for Behavioral Analysis International (ABAI) Convention. Presenters from both organizations shared research findings about autism, brain injury, mental retardation, and other topics and areas. ☺

### Reving Up for the 2008 Rodman Ride for Kids

The 2008 Rodman Ride for Kids presents us with another opportunity to enhance the lives of children in our care—and have some fun, too! The excitement is already building as programs across May Institute reach out to their local communities, form teams, and create their wish lists for items and special program enhancements to be supported by funds raised through the Rodman Ride.



In 2007, thanks to the Ride for Kids and Ride President Don Rodman's generous 15% matching gift, we were able to raise \$115,000 to support May Institute programs. This great success was due in large part to the generous staff and donors who helped support our organization and its mission.

One hundred percent of the money raised went directly to May Institute children's programs—transforming the generosity of our donors into specific contributions and services, including:

- initial funding for a playground and music education at the Woburn May Center school;

- toys for our Early Intervention and Specialty Services programs in Western Massachusetts to assist with skills development; and
- nutrition education classes for parents in Fall River, Mass., that promote healthy eating habits for children.

With the support of our donors, sponsors, and staff members, we anticipate an even more successful ride in 2008.

We invite you to join us!

*To make a donation to the Ride for Kids or to learn more about Ride events and initiatives, contact Shira Moffatt at 781.437.1236 or [smoffatt@mayinstitute.org](mailto:smoffatt@mayinstitute.org).* ☺

## Lawmakers Visit Randolph May Center

The Honorable Stephen F. Lynch, Representative of the 9th District of Massachusetts, visited the May Center for Child Development in Randolph late this spring. Two members of his senior staff, Bob Fowkes, District Director, and Nick Zaferakis, Senior District Representative, joined Congressman Lynch for a tour of the school.

As part of our government outreach plan, we continue to welcome local, state, and federal lawmakers to May Institute and our program sites. "It is critical to remind our government officials that



*State Senator Brian A. Joyce (2nd from left) with May staff (l-r) Alan E. Harchik, Heidi Howard, Dennis C. Russo, and Jessica Busch, Coordinator of Family Services/Admissions.*

although autism is a growing epidemic affecting their constituencies, they can rely on May Institute as a resource for families in their communities," says **Alan E. Harchik**, Ph.D., BCBA, May Institute's Chief Operating Officer.

Most recently, State Senator Brian A. Joyce joined us for a tour of the school. We also welcomed Representative Barbara L'Italien and former Representative Rachel Kaprielian to the campus in Randolph this spring. 🍓

## A DAY TO CELEBRATE!

### Donors Recognized at Ribbon-Cutting for New Residence

Life-long friends Brendan, Michael, and George have a lovely new home in Easton, Mass., thanks to a group of generous donors and a caring community.

We recognized the following donors at a recent

ribbon-cutting/open house at May Institute's newest residential home: Streetwear Consultants; James J. Bosse and Sons Construction Co.; The Relco Companies; Quality Beverage; Joseph Botti

Co.; Welch Properties; Douglas A. King Builders; Yankee Sprinkler Co.; Bradford Steel Company; Boro Sand and Stone Corporation; Benson Enterprises; Mr. and Mrs. Barry M. Portnoy; and Citizens of Easton through Community Preservation Funds.

Parent Barry Pedell spoke on behalf of the families as he thanked all who participated in the construction of this home. 🍓



## State-Wide PBS Program Earns High Marks

One Vermont school district's positive experience with Positive Behavior Support (PBS) services has resulted in a state-wide contract for May Institute's School Consultation division.

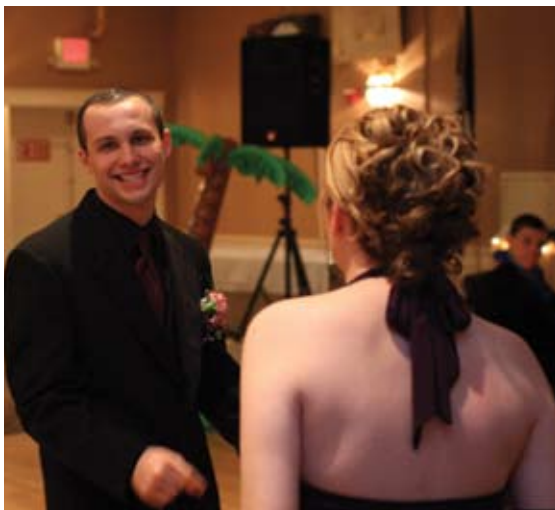
The success of the Institute's PBS program in Addison County last year captured the attention of legislators, mental health directors, superintendents, and parents looking for the right tools to improve the behavioral climate and enhance academic performance in Vermont schools. Within months, the contract was expanded to include school districts across the state.

School-based teams (comprised of administrators, teachers, counselors, support staff, mental health professionals, law enforcement, and school boards members) and May Institute staff **Robert F. Putnam**, Ph.D., BCBA, Senior Vice President of Consultation Services, **Adam B. Feinberg**, Ph.D., BCBA, Director of Academic Supports, and **Christine McGrath**, Ph.D., NCSP, Assistant Director of PBS, recently celebrated the program's first report card.

"Through our partnership with May Institute, we are positively impacting the lives of 14,222 students and their families, 3,692 school personnel, 1,909 children with disabilities, and 222 children with emotional challenges," said Rae Ann Knopf, Education Assistant Division Director of Student Support and Vermont PBS State-Wide Coordinator, in a report to the leadership team. "In one school alone, we have experienced a 64% reduction in out-of-classroom referrals, which tells us the training led by May Institute is making tangible impacts in our classrooms." 🍓

## Prom Night in the Tropics

Palm trees weren't the only things swaying on a recent evening at the Elks Club in Randolph, Mass. Students from the May Center for Education and Neurorehabilitation in Brockton, Mass., our school for children and adolescents with brain injury, joined with their peers from the Ivy Street School to dance the night away at the schools' biennial prom.



*May Center student Jeremy dances with his date.*

Young men dressed in their Sunday best and beautiful young ladies proudly displaying elaborate coiffures disembarked from party buses with huge smiles and great expectations.

The evening's tropical theme made for quite a festive celebration. A tiki hut served as the beverage station, Hawaiian party favors adorned tables, and official prom night photos featured a tropical backdrop. Special song requests were played for the 70 prom-goers, who stepped and swayed to the tunes.

The May Center school provides educational, behavioral, medical, and rehabilitative services for children ages 5–22. May Center students take part in many typical adolescent experiences that positively impact their transition to adulthood.

Use of the Elks Club facility was donated for the evening. The Fairy Godmother Project graciously outfitted some of the attendees. 🍷

## A Giant Thank You!



Some very artistically gifted first graders put smiles on the faces of employees in our Fall River programs with this beautiful 8' X 4' thank you card. Staff from our May Counseling @ Hyland Clinic and Children's Services programs helped students at Wixom Elementary School collect funds for their "Pennies for Leukemia" campaign. With such generous support, the first graders collected the most pennies in the school. We congratulate them on their efforts! 🍷

## RANDOLPH CAMPUS EXPANSION UNDERWAY

An exciting campus expansion in Randolph, Mass., will help us better meet the needs of the students we serve at the May Center school and adults we serve in the community.

The expansion will include a reorganization of the existing campus, and the acquisition, lease, and renovation of two additional properties.

The first property, a new 19,500-square-foot facility, located behind the existing Randolph campus, will house the middle and high school students, making more classrooms available for younger students at the main facility. This space will also enable the expansion of our vocational training programs.

Older students will have easy access to allied health and family services, the library, playground, gymnasium, art and music programs, gross motor room, and cafeteria at the main Randolph building.

The second property will allow us to expand our adult day habilitation services. This 35,500-square-foot facility is located down the road from the main campus. It will be home to a new, state-of-the-art adult day habilitation program that will serve adults currently living in May Institute's group homes.

This expansion will further enhance the lives of the children and adults we serve. 🍷

## Joining Forces to Strengthen Autism Services in NJ

In partnership with May Institute, the Center for Neurological and Neurodevelopmental Health (CNNH) has received a two-year, \$1 million Clinical Enhancement Grant from the New Jersey Governor's Council for Medical Research and Treatment of Autism.

May Institute and CNNH are assisting New Jersey—the state with the highest incidence of autism in the U.S.—by providing consultation on the development of innovative clinical programs for the early identification of autism and the delivery of clinical services.

"This initiative will create an unprecedented state-wide network of clinical programs dedicated to the assessment and treatment of children with autism," said pediatric neurologist Mark Mintz, M.D., President/CEO of CNNH, located in Voorhees, N.J. "It will be an important resource for understanding the extent and severity of the present autism scourge, provide empirical data concerning the response to therapeutic interventions, and create

unique and novel clinical delivery systems to meet the need for autism services."

"May Institute's Board Certified Behavior Analysts and supervising psychologist will help build capacity to assess and identify children with autism," explained **Lee N. Chamberlain, M.S.**, May Institute Vice President of Consultation Services.



"We will establish centers of excellence to enhance access to and quality of autism services. We will also provide core training and other educational services."

Other program goals include creating technological initiatives using the Internet for remote behavioral and clinical assessment and consultation; implementing adolescent-to-adult transitioning strategies; and

constructing multidisciplinary assessment and management programs.

Services for this grant are funded in part by the New Jersey Governor's Council for Medical Research and Treatment of Autism, Special Child Health and Early Intervention Services, and the New Jersey Department of Health and Senior Services.

In addition to the ser-

vices we are providing through this initiative, May Institute also offers intensive in-home and family support services and school consultation throughout the Mid-Atlantic region.

*For more information about May Institute programs and services in New Jersey, please contact Donna Manzi at 781.437.1211 or [dmanzi@mayinstitute.org](mailto:dmanzi@mayinstitute.org).*



## 6 notable grants

*May Institute and the National Autism Center have recently received significant grants and sponsorships. We deeply appreciate the generosity of the corporations, foundations, and agencies that support our vital services. Major supporters and sponsors include:*

1.

Cadence Design Systems, Inc., and its nearly 200 corporate sponsors raised approximately \$1,045,000 through the 2008 Stars & Strikes® fundraising event for May Institute's Pediatric Specialty Center in California's Silicon Valley.

2.

The Ludcke Foundation of Boston awarded a \$50,000 grant to the National Autism Center to support multiple initiatives of the Center.

3.

The Paul F. Shoen Foundation provided a \$12,500 grant for The Bay School's vocational program in Santa Cruz, Calif.

4.

The Rodman Ride for Kids matched 15% of the funds raised by May Institute's board, staff, corporate donors, and friends for the 2007 Rodman Ride for Kids, which resulted in an additional \$14,876 for our programs.

5.

The Massachusetts Governor's Committee on Physical Fitness and Sports once again provided a \$7,500 grant to support sports programming and equipment for the May Center for Child Development in Woburn, Mass.

6.

The TJX Foundation approved a \$5,000 grant for HIRE Enterprises in Walpole, Mass., to provide support for their sheltered workshop and community supported employment program.

## Exceptional Parent Magazine to Feature New Article by Institute Staff

The September issue of *Exceptional Parent* magazine will include an article co-authored by Chief Operating Officer **Alan E. Harchik, Ph.D., BCBA**, and May Institute Senior Writer **Patricia Ladew** entitled, "Choosing Effective Treatments for Children with Autism."

The article features an interview with a military family whose son Cameron was diagnosed with autism at age 3½.

Army Master Sergeant Larry Carter and his wife Christal, who live in the Atlanta, Ga., area, tried a number of different autism therapies and treatments over the past several years, and have become strong proponents for applied behavior analysis (ABA). Cameron is now working with May Institute Senior Behavior Analyst **Jocelyn Priester, M.S., BCBA**.

ABA has far more research support than any other treatment or therapy for children with autism. ABA therapists use



*The Carter family (l-r: Caitlyn, Larry, Christal, and Cameron) takes the opportunity to celebrate milestones together.*

positive reinforcement, teaching in small steps, prompting, and repeated practice to facilitate language development, improve behavior, develop social skills, and support independent living.

The Carters have seen a huge increase in Cameron's language and spontaneous speech as the result of ABA. "He's identifying letters and colors and animals," says Christal. "This is huge. For someone who is not living with autism, it may not seem huge, but for us it is amazing what he has been able to accomplish."

Christal has become such a strong advocate of ABA that she established a community play group and pursued funding to bring together children with autism and their typical peers. She hopes to establish scholarships to assist parents seeking ABA services.

Keep an eye out for the article in the military section of September's *Exceptional Parent* magazine!

For more information about other May Institute articles published in *Exceptional Parent* magazine, please contact Julia Burgess at 781.437.1348 or [jburgess@mayinstitute.org](mailto:jburgess@mayinstitute.org).



*Pictured (l-r) are: Family member (not identified); Courtney Keegan, M.S., BCBA, Senior Behavior Analyst; Ryan Schweck, Behavior Analyst; Heather Castle, Behavior Therapist; Jocelyn Priester, M.S., BCBA, Senior Behavior Analyst; Angela Hornsby, Director of Operations; Dee Dewaker, Behavior Therapist; April Worsdell, Ph.D., BCBA, Director of Clinical Services; Maliha Haider, Behavior Therapist; family member (not identified); Larrisha Spruill; Byeasha Powell, Behavior Therapist; Meghan Holligan, BCABA, Behavior Analyst; Brad Bezilla, M.Ed., BCBA, Vice President, School and Home-Based Behavioral Services; Sandi Rivers, M.Ed., Assistant Clinical Director; and family member (not identified).*

## MAKING STRIDES FOR AUTISM

On a windy and rainy spring morning, 15 staff members from May Institute's Southeast Region in Atlanta braved the weather to participate in the annual Georgia Walk for Autism. The walk was held in downtown Atlanta and included more than 20,000 participants. Over the years, the walk has raised over \$1 million dollars for autism-related initiatives. Our staff members also welcomed children to the May Institute booth where they sponsored games and activities.

Southeast Region services include school and home-based consultation and community residential living for children and adults with autism.

## TBS Open House Draws Over 200 Attendees

During its spring open house, The Bay School (TBS) celebrated the recent expansion of its campus and the opening of its new middle and high school transition programs and vocational/life skills training center. The event was organized and executed with considerable support from the parent group, "Friends of The Bay School."

Throughout the evening, staff and students' family members welcomed more than 250 visitors from the community including educators, advocates, healthcare professionals, friends, and relatives. Activities included tours of the new state-of-the-art, 6,600-square-foot building and multiple slide shows that gave attendees a good overview of student life at the school.

"As a parent of twins with autism, I am proud that The Bay School is meeting the challenge of preparing students for the transition from adoles-



*The Bay School instructors (l-r) Kathryn Johnson and Jilian Sidlo, along with former staff member Marina Kercher, were on hand to welcome guests to the new facility.*

cence to adulthood," said Janet Lishman, co-founder of TBS and open house coordinator. "The new setting and program will support one of the most important times in our children's lives."

In addition to serving as the event's host, TBS Executive Director **Ethan Long**, Ph.D., BCBA, gave a presentation about the school's philosophy and use of evidence-based practices for adolescents with autism. ●

## AUTISM SPEAKS AWARDS TREATMENT GRANT



**Ethan Long**, Ph.D., BCBA, Executive Director of The Bay School and Vice President of May Institute's West Coast Region, and

John Rapp, Ph.D., of St. Cloud State University, have been named co-principal investigators of a study that will focus on stereotyped behavior. The two-year study, funded by a generous grant from Autism Speaks, is entitled, "Altering

motivational variables to treat stereotyped behavior."

The project will study stereotypies, such as hand-flapping or body-rocking, that consume much of the time and attention of a person with autism and compete with his or her ability to learn. It will identify times throughout the day when motivation to engage in these behaviors is low, and determine if additional "low-motivation periods" can be encouraged throughout the day to enhance learning opportunities. ●

## Pediatric Center...

San Jose Mayor Chuck Reed and San Jose/Silicon Valley Congresswoman Zoe Lofgren of the 16th Congressional District were also on hand for the celebration.

The donation will enable the Institute to establish a pediatric specialty center to serve children with autism and their families in the greater Silicon Valley. The Center will provide expert outpatient



*John Murphy (l) and Dennis Russo (r) with San Francisco 49ers player D.J. Parker.*

evaluation, diagnosis, and treatment, and will bring much-needed care to the region's diverse and underserved citizens. It is expected to open by the end of the year in space generously donated by Good Samaritan Hospital in San Jose. ●

## Autism Exhibition...

by May Institute and the National Autism Center, in collaboration with photographer Andrew Child, the exhibit was first displayed at the Massachusetts State House, the Prudential Center, and at Children's Hospital in Boston last year. More recently, it has traveled to California where it was displayed at the Stars & Strikes® bowling fundraiser (see adjacent article), at Cadence Design Systems, Inc., and at Good Samaritan Hospital in San Jose. It will move on to Texas in September. ●

**WEST COAST PEDIATRIC CENTER  
CLINICAL DIRECTOR NAMED**



We welcome **Eleanor Castillo Sumi, Ph.D.**, as Clinical Director of the Pediatric Specialty Center, to be located in California's Silicon Valley.

Dr. Castillo Sumi comes to us from California Community Opportunities, where she served as Executive Director. In her new role, she will have oversight of the new center, which will serve children from birth to 18 years with autism, developmental and learning disabilities, and other behavioral healthcare needs. She will also provide training and consultation to mental health agencies, medical professionals, and educational systems.

Dr. Castillo Sumi received her master's and doctoral degrees in clinical psychology from the Pacific Graduate School of Psychology. 🍷

**SOUTHEAST WELCOMES NEW STAFF**



**Anne Stull, M.A., BCBA**, has recently joined the Southeast Regional Autism Center as a Senior Behavior Analyst. She received both her

bachelor's and master's degrees in psychology from the University of North Carolina, Wilmington. Her graduate work included a clinical concentration in applied behavior analysis (ABA). Anne became a Board Certified Behavior Analyst (BCBA) in March.



**Amy Bontrager**, the Southeast Regional Autism Center's new Community Outreach Specialist, came to Columbus from Army

Community Services at Fort Benning where she provided information and counseling services to families of deployed military personnel. In her new capacity, she will work with military families stationed at Fort Benning and civilian families in the Columbus area. 🍷

**Work/Life Balance: Supporting May Institute Staff**

May Institute is strongly committed to supporting our staff through a variety of programs, benefits, and opportunities for growth. We are always looking for ways to make the work environment and professional experience of our staff as positive, meaningful, and fulfilling as possible.

In order to solicit feedback and assess satisfaction, the Human Resources Department conducted a comprehensive online employee satisfaction survey earlier this year. Many employees from across the organization provided thoughtful, useful feedback, and results of the survey are being shared with staff. Action plans are also currently underway within each division



*Staff member Penny Sperry participates in the Wellness Fair at the May Center for Adult Services in Revere, Mass.*

to respond to suggestions that were made.

Encouraging feedback and ideas from staff is not new to May Institute.

President and CEO **Walter P. Christian**,

Ph.D., ABPP, holds regular staff input committee meetings with representatives from across the organization. Recommendations in the past year included activities to promote health and wellness. In response, a wellness initiative has been launched, begin-

ning with wellness fairs across multiple sites in Massachusetts, including Brockton, Randolph, Revere, Walpole, and West Springfield, and in Manchester, Conn., and Jacksonville, Fla.

Representatives from Blue Cross Blue Shield are attending the fairs to provide information about various health issues. Additional fairs are being planned for many program sites in the coming months. 🍷

**May Institute Receives Communications Awards**

May Institute's *Faces and Voices of Autism* photo exhibition recently received a first place "gold" award from the New England Society of Healthcare Communications (NESHCo) and a coveted "Bell Ringer" award from the Publicity Club of New England.

The Institute's Communications/Public Relations team was the only bell award winner in the Publicity Club's campaign

division that was not represented by an outside public relations/advertising firm.

The team also received awards for other initiatives including: the launch the Southeast Regional Autism Center; a letter to the editor of *The New York Times* regarding the increase in autism; an autism story on National Public Radio; and a comprehensive brochure for the Southeast Regional Autism Center. 🍷



## NAC to Offer Autism Screenings in Boston

The National Autism Center (NAC) and Whittier Street Health Center, a community health center in Roxbury, Mass., are working together to offer free autism screenings to families served at the Health Center.

“We know the incidence rate for undiagnosed autism is higher in underserved urban settings,” explains **Laura F. Fisher**, Psy.D., Director of NAC’s Autism Spectrum Disorders Assessment Clinic. “Because early diagnosis and crucial early intervention services are the best hope for positive outcomes for children with autism, time is of the essence. By bringing autism screenings directly into these neighborhoods, we are making access to services—and the timely delivery of those services—possible for many families who otherwise would have very limited options for care.”

Services at Whittier Street Health Center reach more than 12,000 individuals in Roxbury and surrounding communities.

The Center serves a very diverse population; 60% of its client base is Latino or African American. Whittier also serves a growing immigrant community, of which 13 percent are Somali, West Africans, and Sudanese.

“The partnership between Whittier Street Health Center and the NAC offers a unique opportunity to bring autism screening and expertise to a population that has not had this level of access in the past,” says Shikha Anand, M.D., M.P.H., of Whittier Street Health Center. “With the provision of this service, we have the opportunity to explore together the role of traditional screening methods in a population with limited health literacy and English proficiency.”

Dr. Fisher we will be conducting screenings once a month beginning in August.

*For more information, please contact Jennifer Papagno at 781.437.1375 or [jpapagno@nationalautismcenter.org](mailto:jpapagno@nationalautismcenter.org).* ●

## National Autism Center Extends Thanks

The National Autism Center is grateful to the many individuals in the national and international autism communities who have donated their time and expertise to the National Standards Project.

May Institute professionals have made significant contributions that will culminate in a report that identifies the strength of research evidence for educational and behavioral treatments. Four individuals from this group of volunteers deserve special recognition: **Jennifer D. Bass**, Psy.D., Director of Curriculum Development, and Clinical Directors **Katherine T. Gilligan**, M.S., BCBA, and **Hanna Rue**, Ph.D., of the Randolph May Center school; and **Dipti Mudgal**, Ph.D., Staff Psychologist at the May Center school in Brockton, Mass.

These professionals reviewed many articles, assisted in the original evaluation process, and provided feedback. Thanks to the work of the group, parents, educators, and service providers will be able to easily access the National Standards Report. ●

### CONTINUED FROM PAGE 3

## Global Reach...

training to the Warsaw Center. “This is a very important issue for us,” says Dr. Suchowierska. “We want to learn how to more effectively train and work with parents so they can take better care of their children with autism.”

Dr. Suchowierska is the only Board Certified Behavior Analyst in Poland, but she hopes that will change soon. “We have worked hard to create a board

certification program in conjunction with the Warsaw School of Social Psychology, and our first class is ready to sit for their Behavior Analyst certification exams.”

“More and more, we’re finding Eastern Bloc countries coming to us and asking us to help them develop human services programs,” says Dr. Russo. “We are pleased to be able to provide them with significant support and technical assistance.”

## Icelandic Educators Visit

Eight schools and 4,000 students in Lawrence, Mass., are benefiting from May Institute’s Positive Behavior Support (PBS) services. Their success has attracted the attention of the Iceland Department of Education. Recently, a group of educators from Iceland visited May Institute’s Randolph campus and the Guilmette Elementary School in Lawrence to learn more about our PBS model. ●

# UPCOMING @MAY

## WORKSHOPS & FORUMS

### May Institute Speaker Series: Experts on Autism

This FREE series is jointly sponsored by the May Center for Child Development and the National Autism Center and will take place at the Randolph, Mass., campus.

#### Evidence-Based Practice and Autism Spectrum Disorders: The National Standards Report

On September 10, 2008, at 6:30 p.m., Susan M. Wilczynski, Ph.D., BCBA, Executive Director of the National Autism Center, will review the results of the National Standards Project. The presentation will also address the value of data-based clinical judgment, assessing family choice, and capacity to implement an intervention accurately.

For more information, or to register, please call 800.778.7601, ext. 456, or email [info@mayinstitute.org](mailto:info@mayinstitute.org).

### New Jersey Fall Autism Workshop Series for Parents

To celebrate the opening of our new office in Burlington, N.J., May Institute is pleased to offer this FREE series.

#### Autism & Developmental Disabilities

On October 15, 2008, from 1:00 to 2:30 p.m., and 6:00 to 7:30 p.m., professionals from May Institute will discuss the key features of autism and developmental disabilities.

#### What is Applied Behavior Analysis (ABA)?

On October 14, 2008, from 1:00 to 2:30 p.m., and 6:00 to 7:30 p.m., professionals from May Institute will discuss the behavior of children with autism and using positive strategies to support the development of desired behaviors.

#### Social Skills for Children with Autism

On October 21, 2008, from 1:00 to 2:30 p.m., and 6:00 to 7:30 p.m., professionals from May Institute will address age appropriate social skills and how to incorporate social skill instruction into a child's daily routine.

Day workshops will take place at Burlington County Library in Westampton, N.J.

Evening workshops will take place at May Institute's office in Burlington, N.J.

For more information, or to register, please call 800.778.7601, ext. 456, or email [info@mayinstitute.org](mailto:info@mayinstitute.org).

### PBS: Research to Practice

The 4th annual forum on Positive Behavior Support will be held at the Four Points Sheraton Hotel in Norwood, Mass., on November 21, 2008. George Sugai, Ph.D., Carole J. Neag Endowed Chair and Professor of Special Education at the University of Connecticut, and Susan M. Wilczynski, Ph.D., BCBA, Executive Director of the National Autism Center, will serve as the keynote speakers.

For more information, or to register, please call 800.778.7601, ext. 456, or email [pbs@mayinstitute.org](mailto:pbs@mayinstitute.org).

## ABOUT MAY INSTITUTE

Founded in 1955, May Institute has its roots in a family's vision of enabling children with disabilities to lead the fullest lives possible.

Today, May Institute provides educational, rehabilitative, and behavioral healthcare services to individuals with autism and other developmental disabilities, brain injury, mental illness, and behavioral healthcare needs. The Institute also provides training and consultation services to professionals, organizations, and public school systems.

Our programs touch the lives of more than 25,000 individuals and their families each year at more than 200 service locations in the Northeast, Mid-Atlantic, Southeast, and on the West Coast.

Together with the National Autism Center<sup>SM</sup>, whose initial development has been sponsored by May Institute, we are committed to identifying and applying universal standards for the treatment of autism and to providing care and hope to families throughout the country.

**MayInstitute**  
Shaping Futures. Changing Lives.

@MAY is published three times a year by May Institute's Office of Communications, 41 Pacella Park Drive, Randolph, Massachusetts 02368. © 2008 May Institute, Inc.

EDITORIAL STAFF: Julia Burgess, Editor | Patricia Ladew, Editorial Associate | Juanita Class, Designer | Eileen Pollack, Vice President of Communications

tel] 781.437.1348 fax] 781.437.1350 e-mail] [jburgess@mayinstitute.org](mailto:jburgess@mayinstitute.org) web] [www.mayinstitute.org](http://www.mayinstitute.org)

**MayInstitute**  
Shaping Futures. Changing Lives.

41 Pacella Park Drive, Randolph, MA 02368

ADDRESS SERVICE REQUESTED

Nonprofit Org.  
U.S. Postage  
PAID  
Randolph, MA  
Permit No. 29